

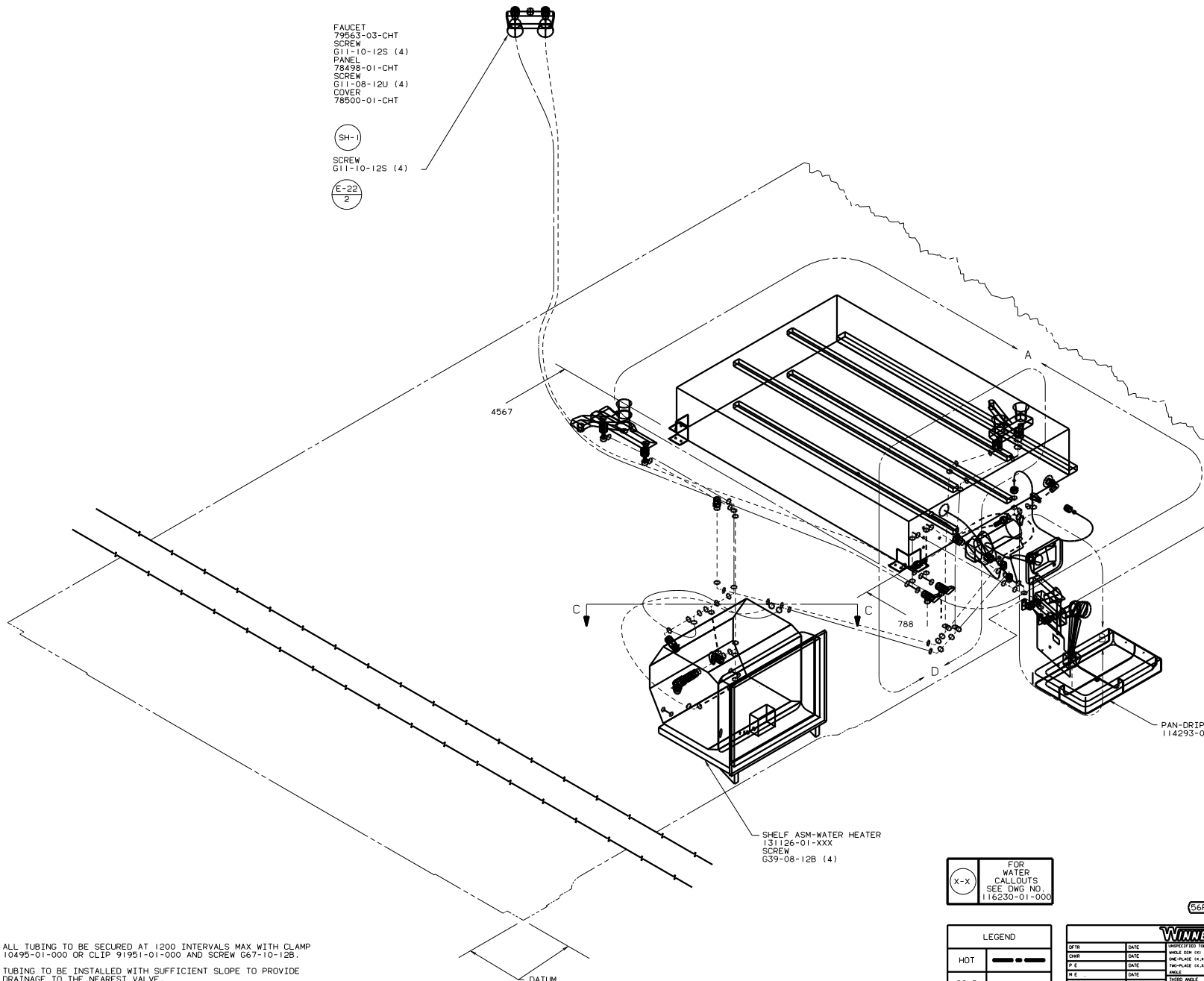
VIEW B-B

VIEW C-C

VIEW A-A

FAUCET
 79563-03-CHT
 SCREW
 G11-10-12S (4)
 PANEL
 78498-01-CHT
 SCREW
 G11-08-12U (4)
 COVER
 78500-01-CHT

(SH-1)
 SCREW
 G11-10-12S (4)
 (E-22)
 2



- NOTES:
1. PLASTIC FITTINGS TO BE SEALED WITH SEALANT 84456-01-000.
 2. TUBING TO BE INSTALLED WITH SUFFICIENT SLOPE TO PROVIDE DRAINAGE TO THE NEAREST VALVE.
 3. ALL TUBING TO BE SECURED AT 1200 INTERVALS MAX WITH CLAMP 10495-01-000 OR CLIP 91951-01-000 AND SCREW G67-10-12B.

SHELF ASM-WATER HEATER
 131126-01-XXX
 SCREW
 G39-08-12B (4)

PAN-DRIP EXTERIOR
 114293-01-CHT

(X-X) FOR WATER CALLOUTS SEE DWG NO. 116230-01-000

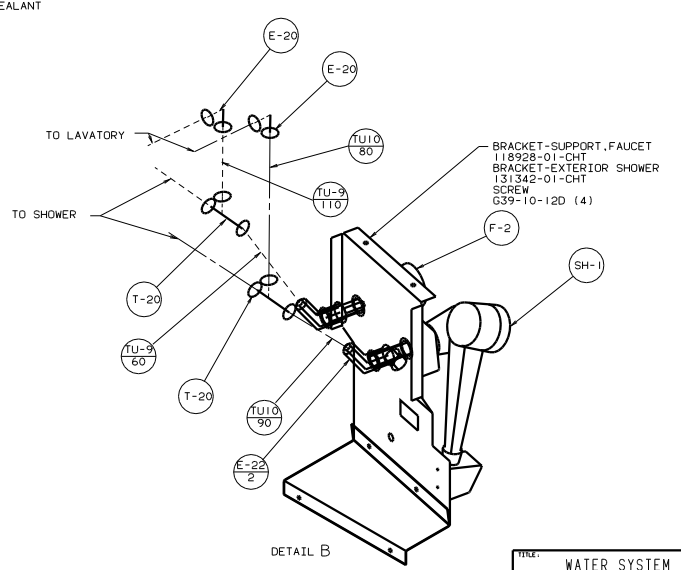
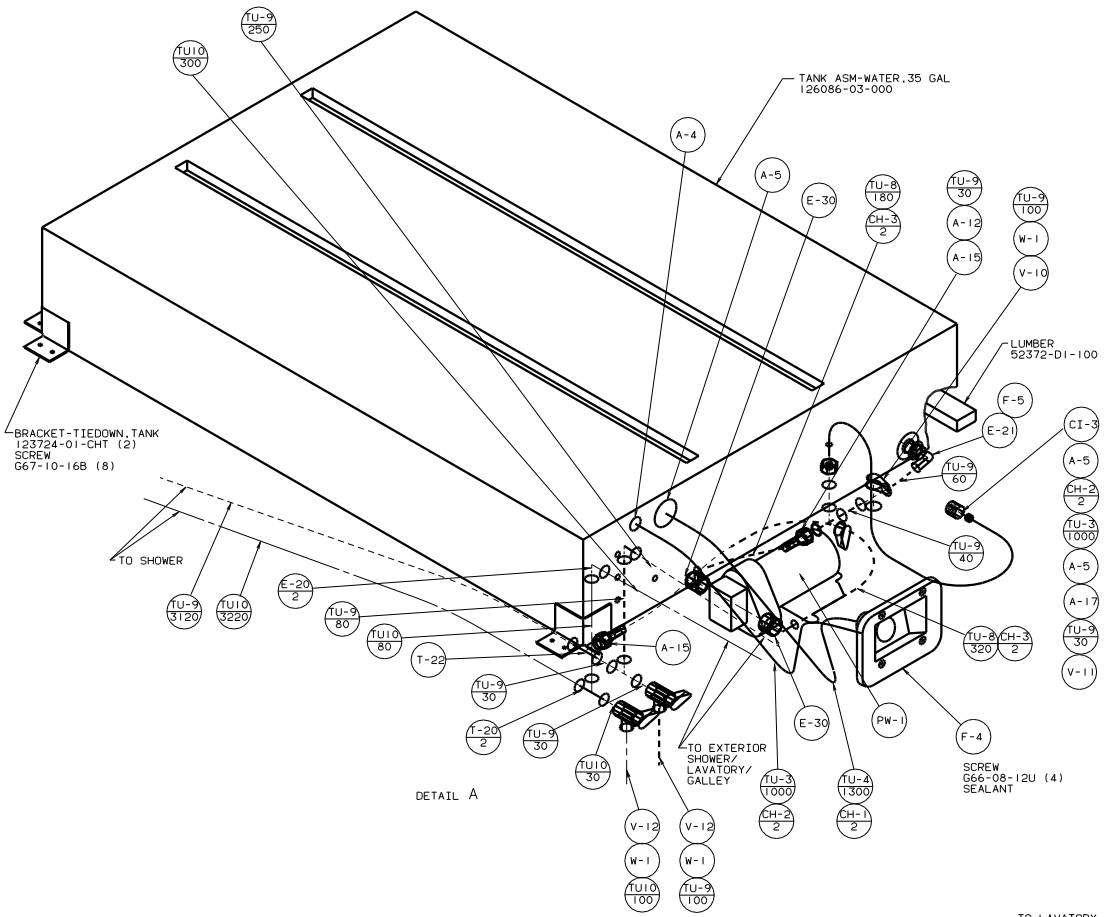
LEGEND

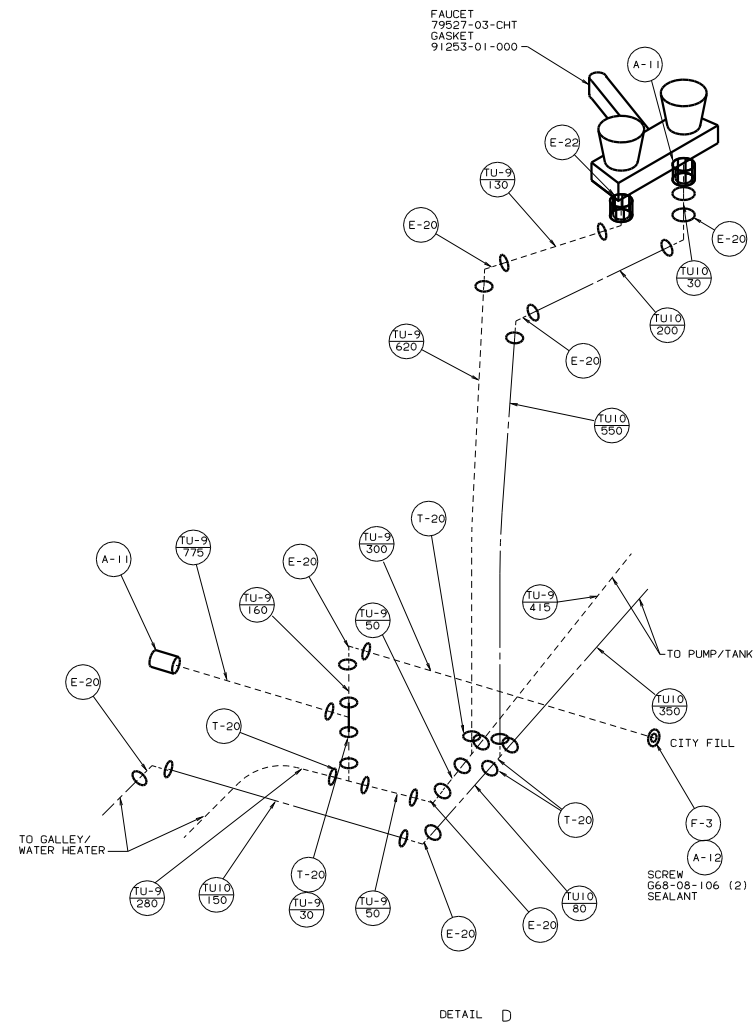
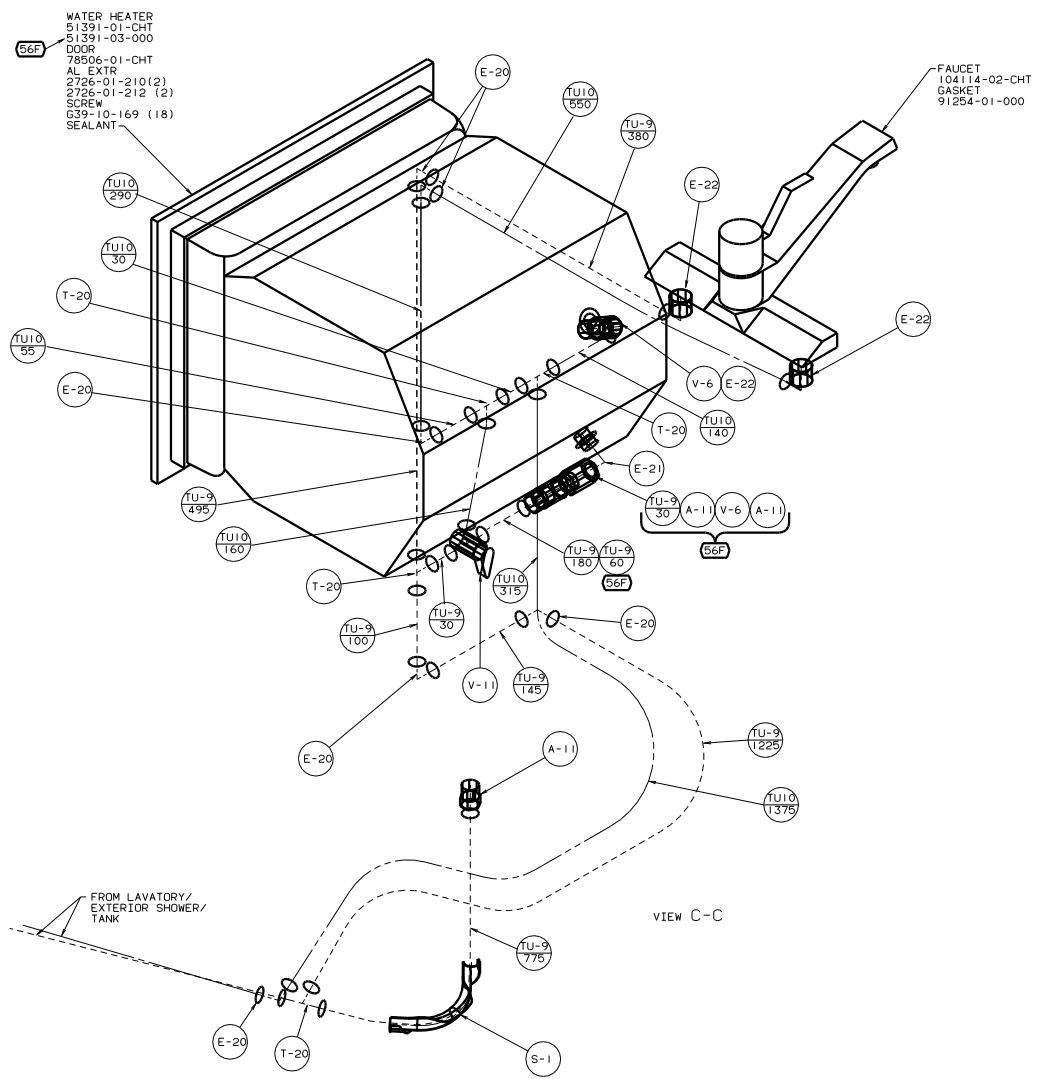
HOT	●●●●●
COLD	●●●●●

(56F) REAR AUTO HEATER

WINNEBAGO		99 430V
OF IN	DATE	UNSPECIFIED TOLERANCES ARE:
CHP	DATE	WELD DIM (X.X)
TYPE	DATE	ONE-PLACE (X.X1)
D/E	DATE	TWO-PLACE (X.XX)
D/E	DATE	THREE-PLACE (X.XXX)
CDR	DATE	INDIC. W/ANGLE PROJECTION
LAUNCH NO.	430V9	TITLE: WATER SYSTEM INSTL
DWG #	SCALE: NONE	30 PER SCALE DIMENSIONS
ALL DIMENSIONS ARE IN MILLIMETERS	SHEET 1 OF 3	130461

H
G
F
E
D
C
B
A





REAR AUTO HEATER

99 430V

TITLE		WATER SYSTEM INSTL	
PROJECT NO.	REV	DATE	BY
130461	1		
DRAWN BY		130461	