



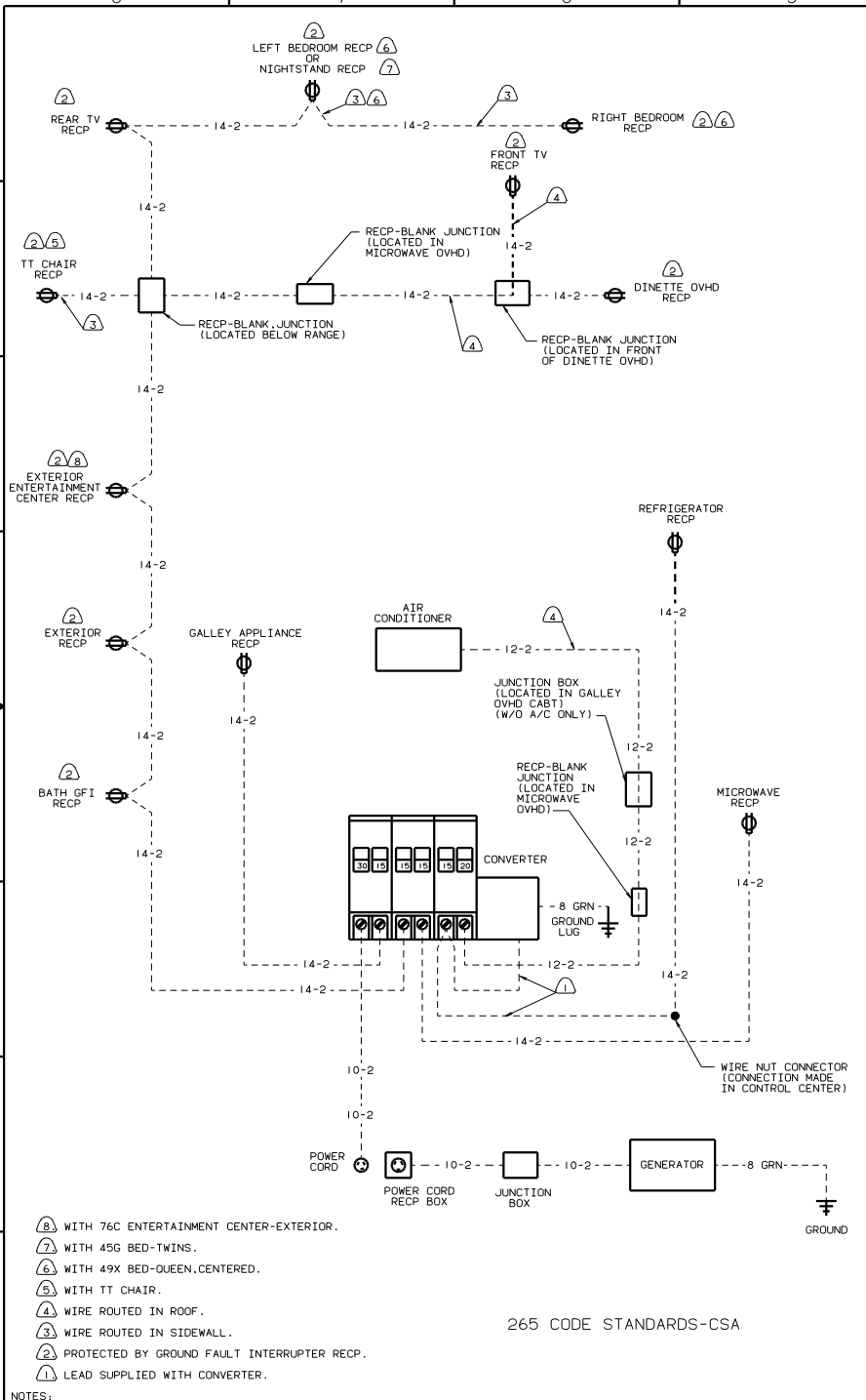
DANGER

Danger of electrical shock, burns or death. Always remove all power sources before attempting any repair, service or diagnostic work. Power can be present from shore power, generator, inverter or battery. All power sources must be disabled and secured before performing any service.



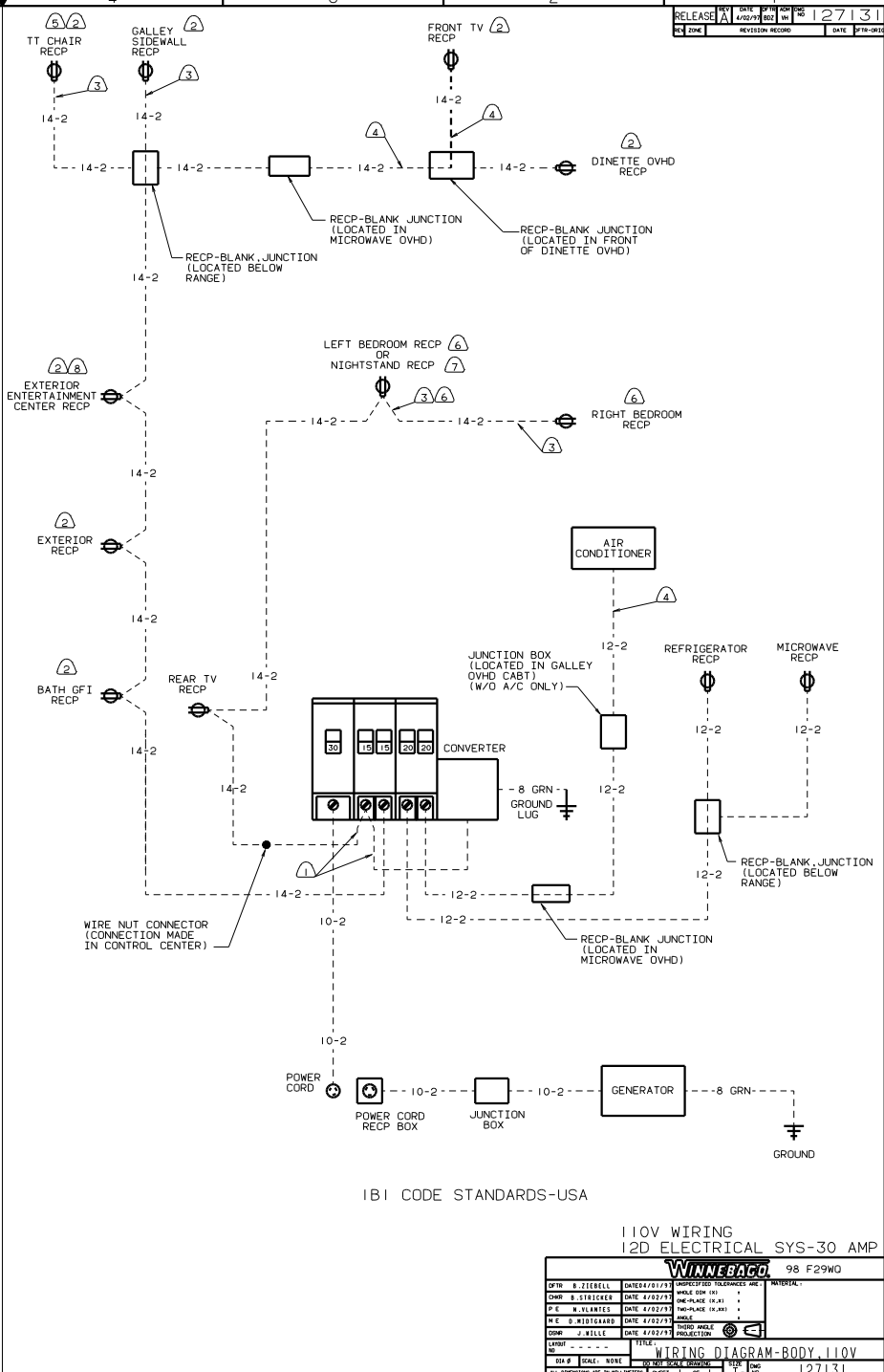
CAUTION

If you lack the skills, tools or equipment to perform diagnostic or repair work leave such work to an authorized Winnebago Industries dealer or other qualified shop.



- Ⓐ WITH 76C ENTERTAINMENT CENTER-EXTERIOR.
- Ⓡ WITH 45G BED-TWINS.
- Ⓓ WITH 49X BED-QUEEN,CENTERED.
- Ⓔ WITH TT CHAIR.
- Ⓛ WIRE ROUTED IN ROOF.
- Ⓜ WIRE ROUTED IN SIDEWALL.
- Ⓝ PROTECTED BY GROUND FAULT INTERRUPTER RECP.
- Ⓟ LEAD SUPPLIED WITH CONVERTER.

265 CODE STANDARDS-CSA



IBI CODE STANDARDS-USA

110V WIRING
12D ELECTRICAL SYS-30 AMP

DATE: 4/22/79		DATE: 4/22/79		DATE: 4/22/79	
OPN: B-2(BELL)	DATE: 4/22/79	UNDESIGNED TOLERANCES ARE:	MATERIAL:		
OMP: B-2(BELL)	DATE: 4/22/79	WHOLE OR 1/2"	1/16"		
OPN: B-2(BELL)	DATE: 4/22/79	ONE-PLACE (16.21)	1/16"		
OPN: B-2(BELL)	DATE: 4/22/79	TWO-PLACE (16.21)	1/16"		
OPN: B-2(BELL)	DATE: 4/22/79	THREE-PLACE (16.21)	1/16"		
OPN: B-2(BELL)	DATE: 4/22/79	FOUR-PLACE (16.21)	1/16"		
OPN: B-2(BELL)	DATE: 4/22/79	FIVE-PLACE (16.21)	1/16"		
OPN: B-2(BELL)	DATE: 4/22/79	SIX-PLACE (16.21)	1/16"		
OPN: B-2(BELL)	DATE: 4/22/79	SEVEN-PLACE (16.21)	1/16"		
OPN: B-2(BELL)	DATE: 4/22/79	EIGHT-PLACE (16.21)	1/16"		
OPN: B-2(BELL)	DATE: 4/22/79	NINE-PLACE (16.21)	1/16"		
OPN: B-2(BELL)	DATE: 4/22/79	TEN-PLACE (16.21)	1/16"		
OPN: B-2(BELL)	DATE: 4/22/79	ELEVEN-PLACE (16.21)	1/16"		
OPN: B-2(BELL)	DATE: 4/22/79	TWELVE-PLACE (16.21)	1/16"		

WIRING DIAGRAM-BODY, 110V
SHEET 1 OF 1