



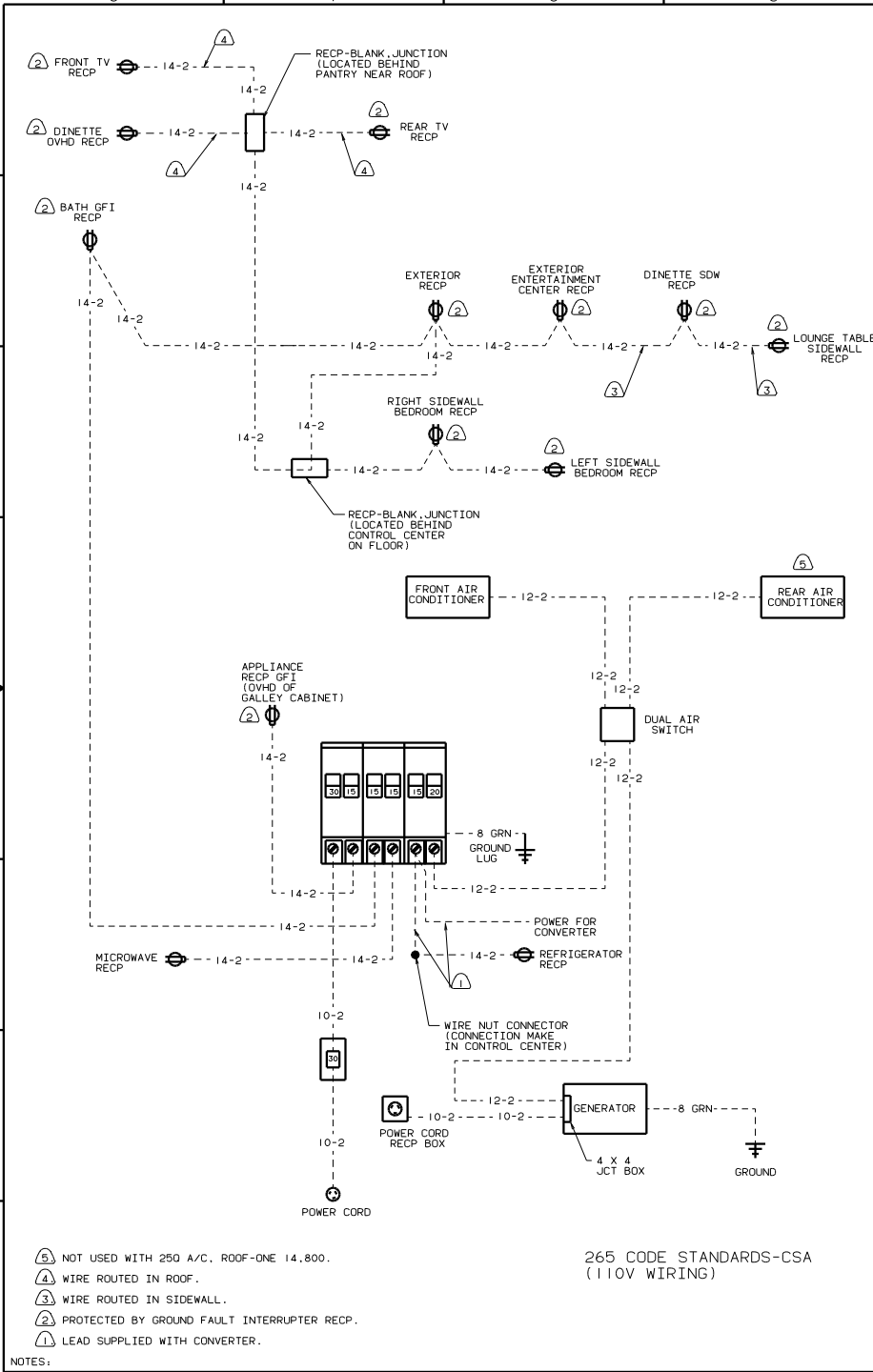
DANGER

Danger of electrical shock, burns or death. Always remove all power sources before attempting any repair, service or diagnostic work. Power can be present from shore power, generator, inverter or battery. All power sources must be disabled and secured before performing any service.



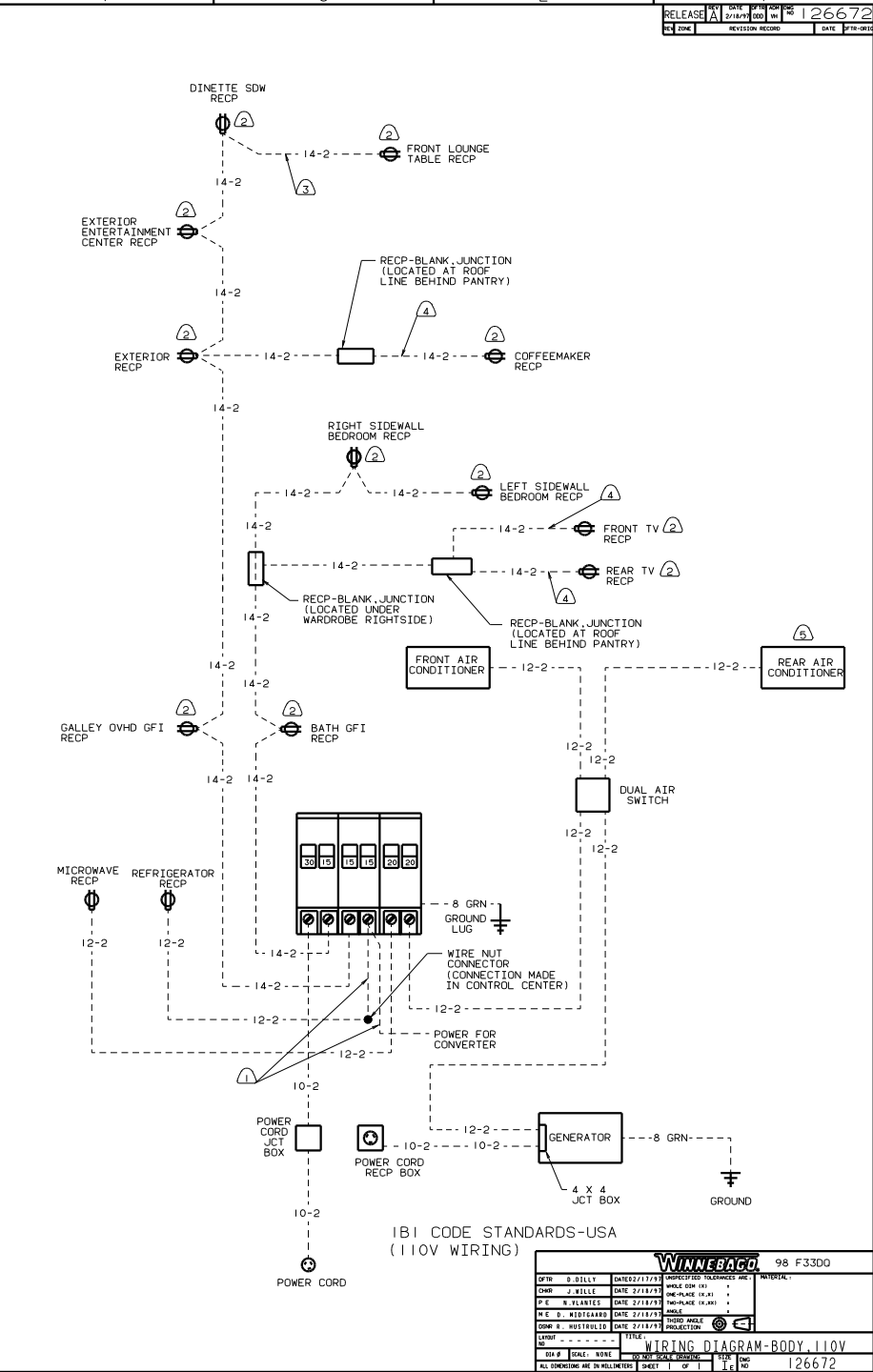
CAUTION

If you lack the skills, tools or equipment to perform diagnostic or repair work leave such work to an authorized Winnebago Industries dealer or other qualified shop.



265 CODE STANDARDS-CSA
 (110V WIRING)

- ⑤ NOT USED WITH 250 A/C. ROOF-ONE 14,800.
- ④ WIRE ROUTED IN ROOF.
- ③ WIRE ROUTED IN SIDEWALL.
- ② PROTECTED BY GROUND FAULT INTERRUPTER RECP.
- ① LEAD SUPPLIED WITH CONVERTER.



IB1 CODE STANDARDS-USA
 (110V WIRING)

OPN	D. BILLY	DATE 02/17/97	UNDESIGNED TOLERANCES ARE:	MATERIAL
CHK	J. WILLE	DATE 2/18/97	WELD DIM 101	
DR	B. WILKINS	DATE 2/17/97	ONE-PLACE 19.21	
D/E	D. MERTZLAK	DATE 2/17/97	TWO-PLACE 19.21	
CON	B. MUSTRUBEL	DATE 2/18/97	THIRD PLACE 19.21	
WINNEBAGO 98 F3300				
WIRING DIAGRAM-BODY 110V				
REV	SCALE	NOTE	SHEET	1 OF 1
				126672