



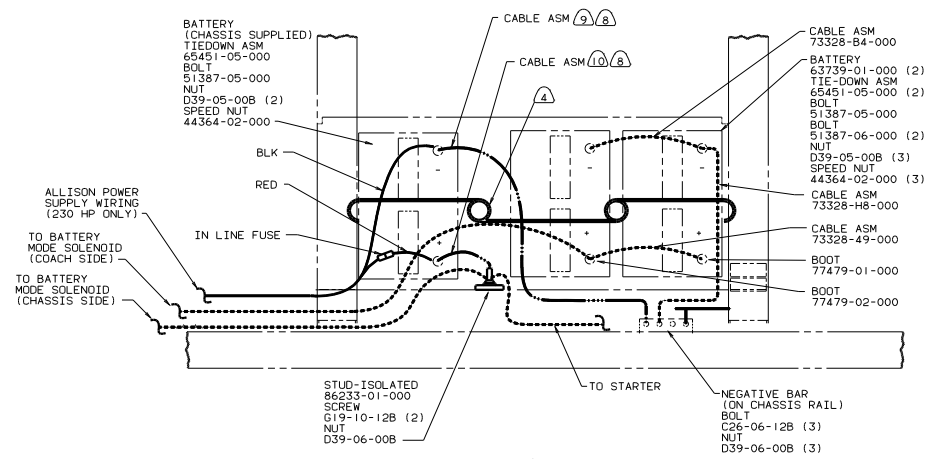
DANGER

Danger of electrical shock, burns or death. Always remove all power sources before attempting any repair, service or diagnostic work. Power can be present from shore power, generator, inverter or battery. All power sources must be disabled and secured before performing any service.

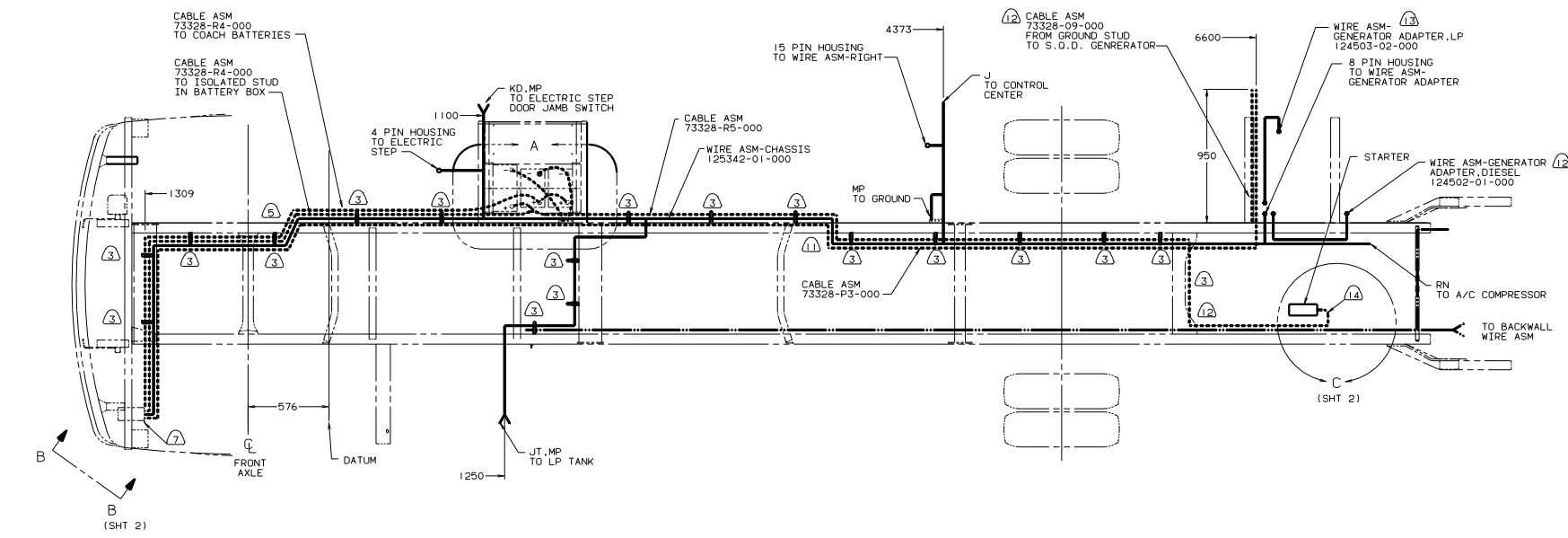


CAUTION

If you lack the skills, tools or equipment to perform diagnostic or repair work leave such work to an authorized Winnebago Industries dealer or other qualified shop.



DETAIL A



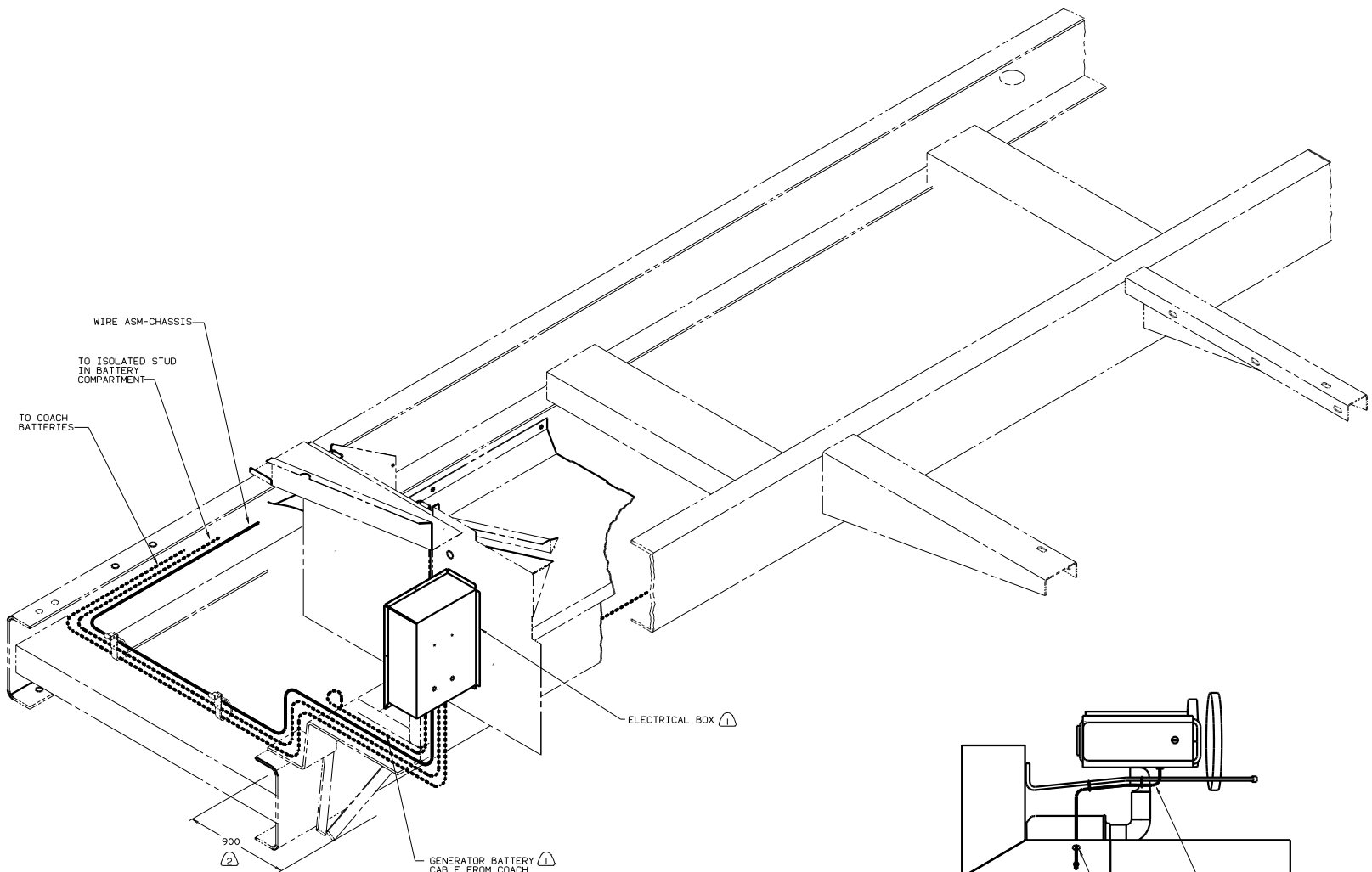
- ⑬ USE WITH LP GENERATOR.
- ⑭ USE WITH S.O.D. DIESEL GENERATOR.
- ① ROUTE WIRES & CABLE INSIDE CHASSIS RAIL AT THIS POINT & TO THE REAR.
- ⑩ TRIM CABLE TO 400MM, ADD TERMINAL 8348-01-000.
- ⑨ TRIM CABLE TO 800MM, ADD TERMINAL 8348-01-000.
- ⑧ SUPPLIED WITH CHASSIS.
- ⑦ SEE WIRING INSTL-FRONT END FOR ADDITIONAL INFORMATION.
- ⑥ SECURE SO WIRES DO NOT CONTACT EXHAUST.
- ⑤ ROUTE CABLES THRU CHASSIS RAIL IN THIS AREA, FOLLOW INSIDE RAIL TO FRONT.
- ④ USE TWO NUTS HERE TO ACCOUNT FOR BATTERY HEIGHT DIFFERENCE.
- ③ USE WIRE TIE 8343-02-000 OR 8343-03-000 AS REQUIRED.

⑭ BATTERY CABLE MUST BE INSTALLED TO STARTER MOTOR BEFORE ENGINE WIRING HARNESS AND ROUTED IN SUCH A MANNER AS TO PREVENT ANY POSSIBLE DEGRADATION FROM THE EXHAUST SYSTEM.

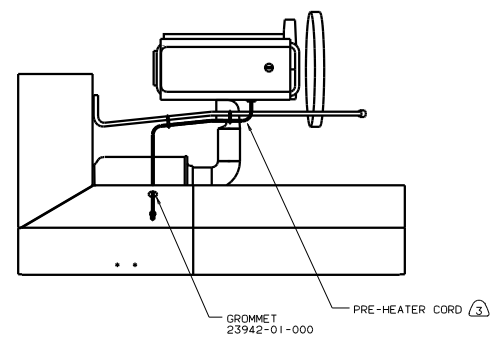
1. LEGEND: — WINNEBAGO, - - - - - CABLE, CHASSIS SUPPLIED.

NOTES:

WINNEBAGO 97 G34WK PUSHER			
OP/IN	DATE	UNDESIGNED TOLERANCES ARE:	MATERIAL
CHP	DATE	HALF DIM (H)	F 1/3
PIE	DATE	ONE-PLACE (H, J)	.
D/E	DATE	HOLE-PLACE (H, J)	.
D/E	DATE	ANGLE	.
CDR	DATE	THIRD ANGLE PROJECTION	.
DRAWN		TITLE: WIRING INSTL-CHASSIS	
REV	SCALE	NO	125341
ALL DIMENSIONS ARE IN MILLIMETERS		SHEET	1 OF 2



VIEW B-B



VIEW C

- ③ SECURE CORD AWAY FROM ALL MOVING PARTS AND EXHAUST WITH TIE-WIRE 93147-01-000 AS REQUIRED.
- ② LAY BATTERY AND GENERATOR CABLES TO THIS DIMENSION FROM MAIN CHASSIS RAIL TO START INSTALLATION.
- ① SEE WIRING INSTL-FRONT END FOR ADDITIONAL INFORMATION.

NOTES:

97 G34WK
PUSHER

TITLE: WIRING INSTL-CHASSIS	
DO NOT SCALE DRAWING	DATE
SHEET 2 OF 2	1.6
	NO 125341