



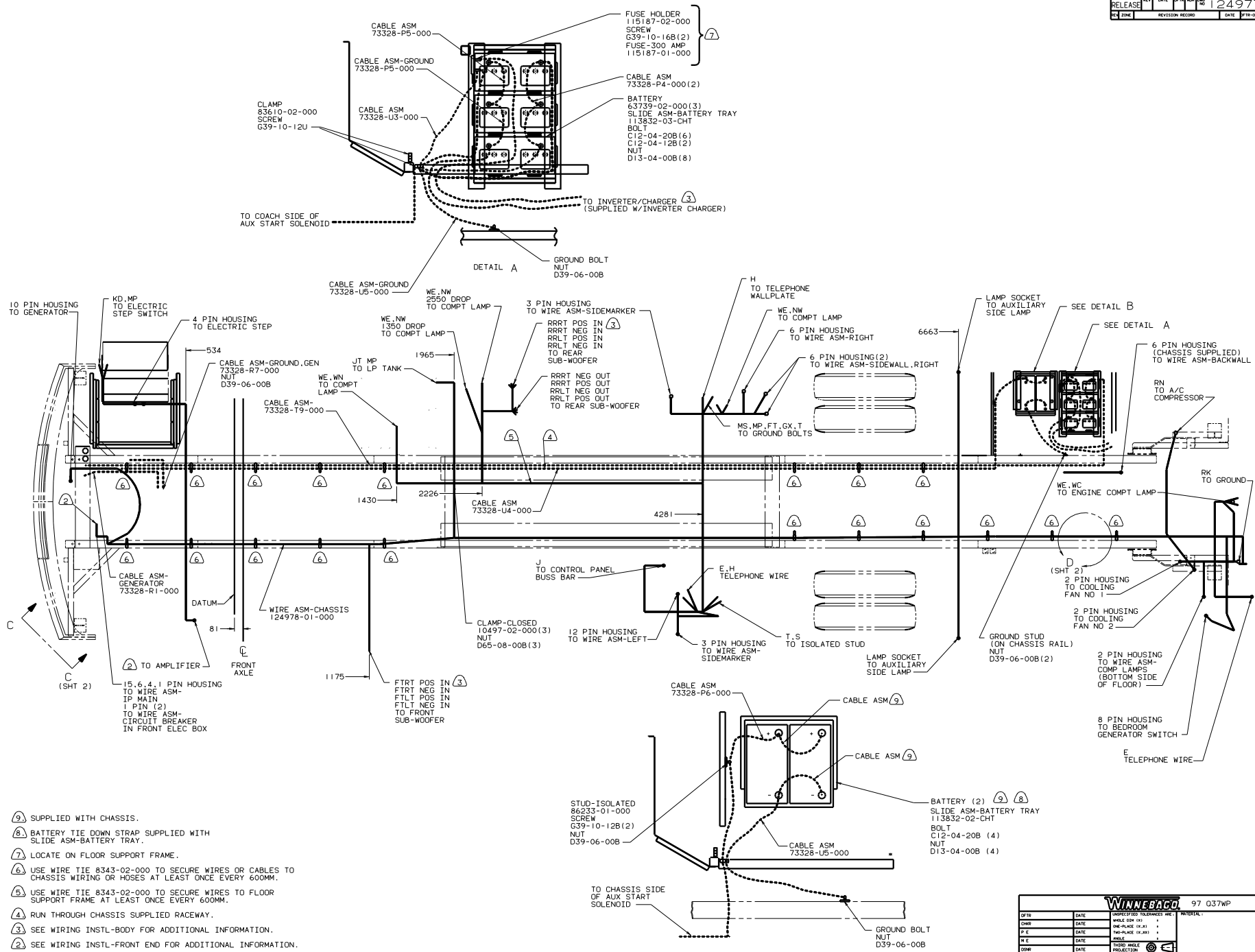
DANGER

Danger of electrical shock, burns or death. Always remove all power sources before attempting any repair, service or diagnostic work. Power can be present from shore power, generator, inverter or battery. All power sources must be disabled and secured before performing any service.



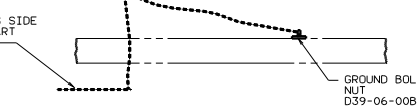
CAUTION

If you lack the skills, tools or equipment to perform diagnostic or repair work leave such work to an authorized Winnebago Industries dealer or other qualified shop.

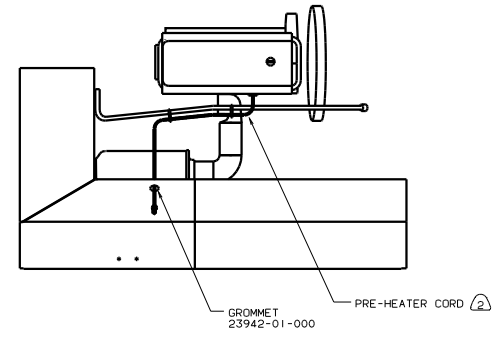


- ⑨ SUPPLIED WITH CHASSIS.
 - ⑧ BATTERY TIE DOWN STRAP SUPPLIED WITH SLIDE ASM-BATTERY TRAY.
 - ⑦ LOCATE ON FLOOR SUPPORT FRAME.
 - ⑥ USE WIRE TIE 8343-02-000 TO SECURE WIRES OR CABLES TO CHASSIS WIRING OR HOSES AT LEAST ONCE EVERY 600MM.
 - ⑤ USE WIRE TIE 8343-02-000 TO SECURE WIRES TO FLOOR SUPPORT FRAME AT LEAST ONCE EVERY 600MM.
 - ④ RUN THROUGH CHASSIS SUPPLIED RACEWAY.
 - ③ SEE WIRING INSTL-BODY FOR ADDITIONAL INFORMATION.
 - ② SEE WIRING INSTL-FRONT END FOR ADDITIONAL INFORMATION.
1. LEGEND: — WINNEBAGO, - - - - - CABLE, ····· CHASSIS SUPPLIED.

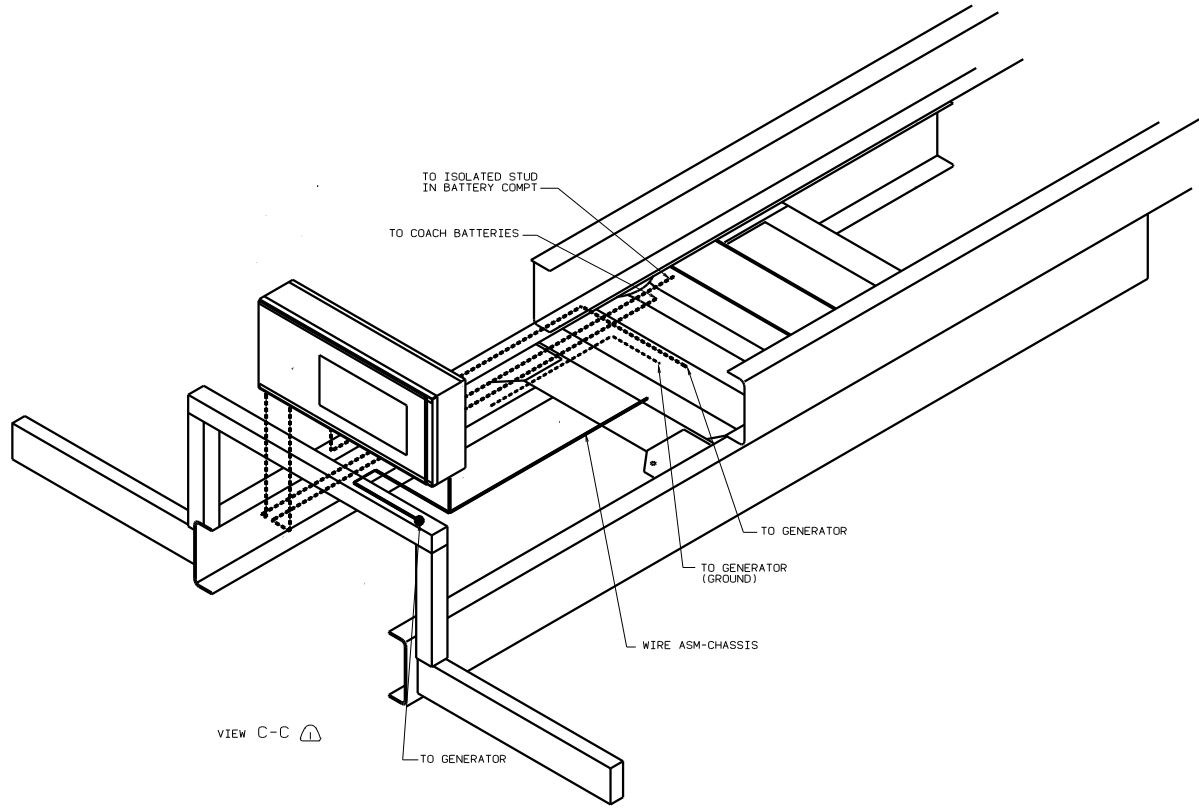
NOTES:
 Copyright 2005 Winnebago Industries, Inc.



WINNEBAGO		97 Q37WP	
OPN	DATE	UNDESIGNED TOLERANCES ARE	MATERIAL
CHG	DATE	ONE-PLACE (1.41)	
REV	DATE	TWO-PLACE (1.40)	
DEL	DATE	ANGLE	
COMP	DATE	THIRD ANGLE	
LAYOUT		TITLE	
BY		WIRING INSTL-CHASSIS	
SCALE		SHEET 1 OF 2	
DATE		124977	
DRAWN		1:6	
CHECKED		1:6	
APPROVED		1:6	



VIEW D



VIEW C-C ①

- ② SECURE CORD AWAY FROM ALL MOVING PARTS AND EXHAUST WITH TIE-WIRE 93147-01-000 AS REQUIRED.
- ① SEE WIRING INSTL-FRONT END FOR ADDITIONAL INFORMATION.

NOTES:

97 Q37WP

TITLE: WIRING INSTL-CHASSIS	
NO. OF SHEETS: 2	OF: 2
SHEET: 2 OF 2	REV: 1 E NO: 124977